



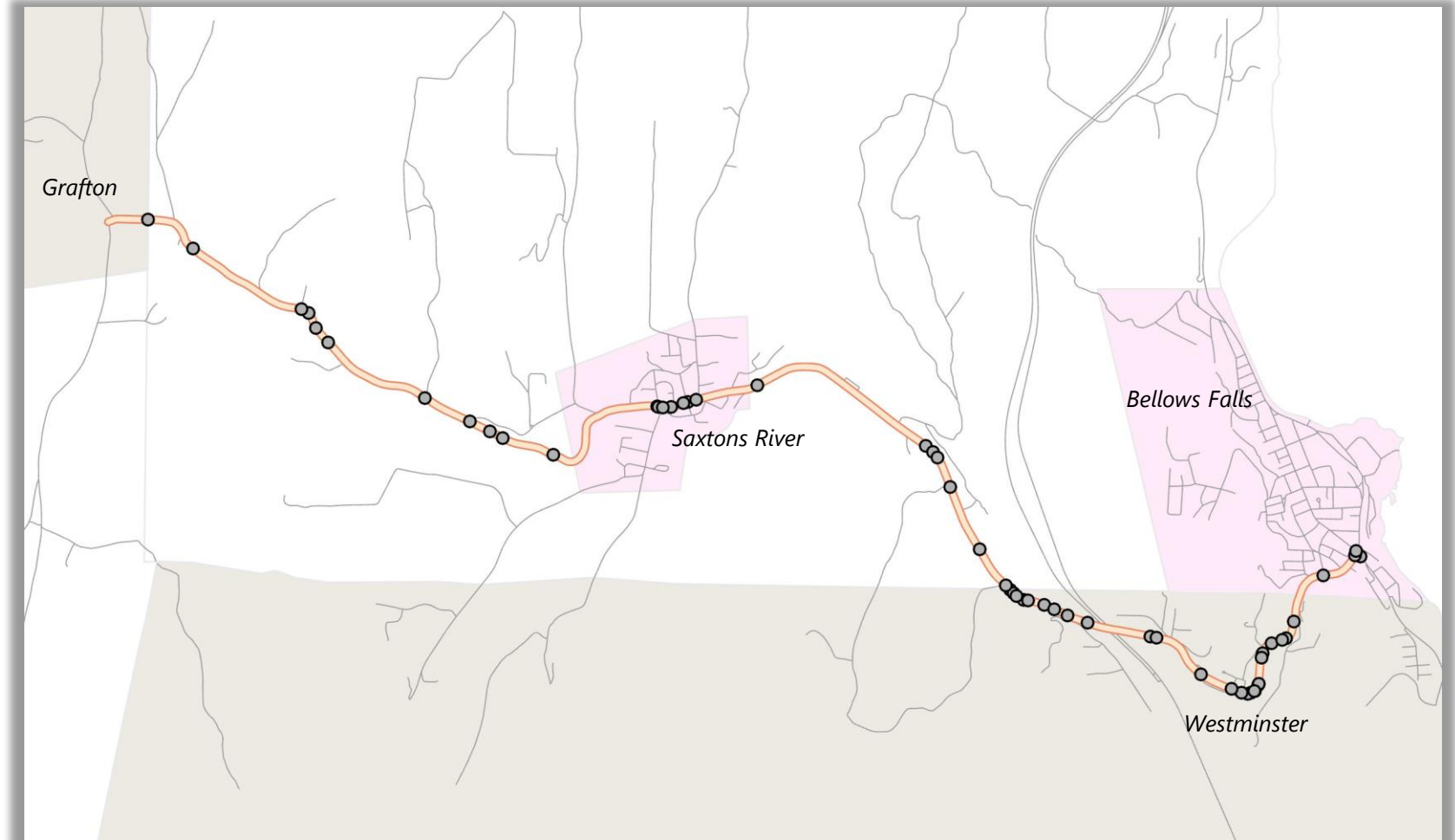
Rockingham Safety Action Plan

January 16th, 2025

Crash Setting

Crashes by Zone:

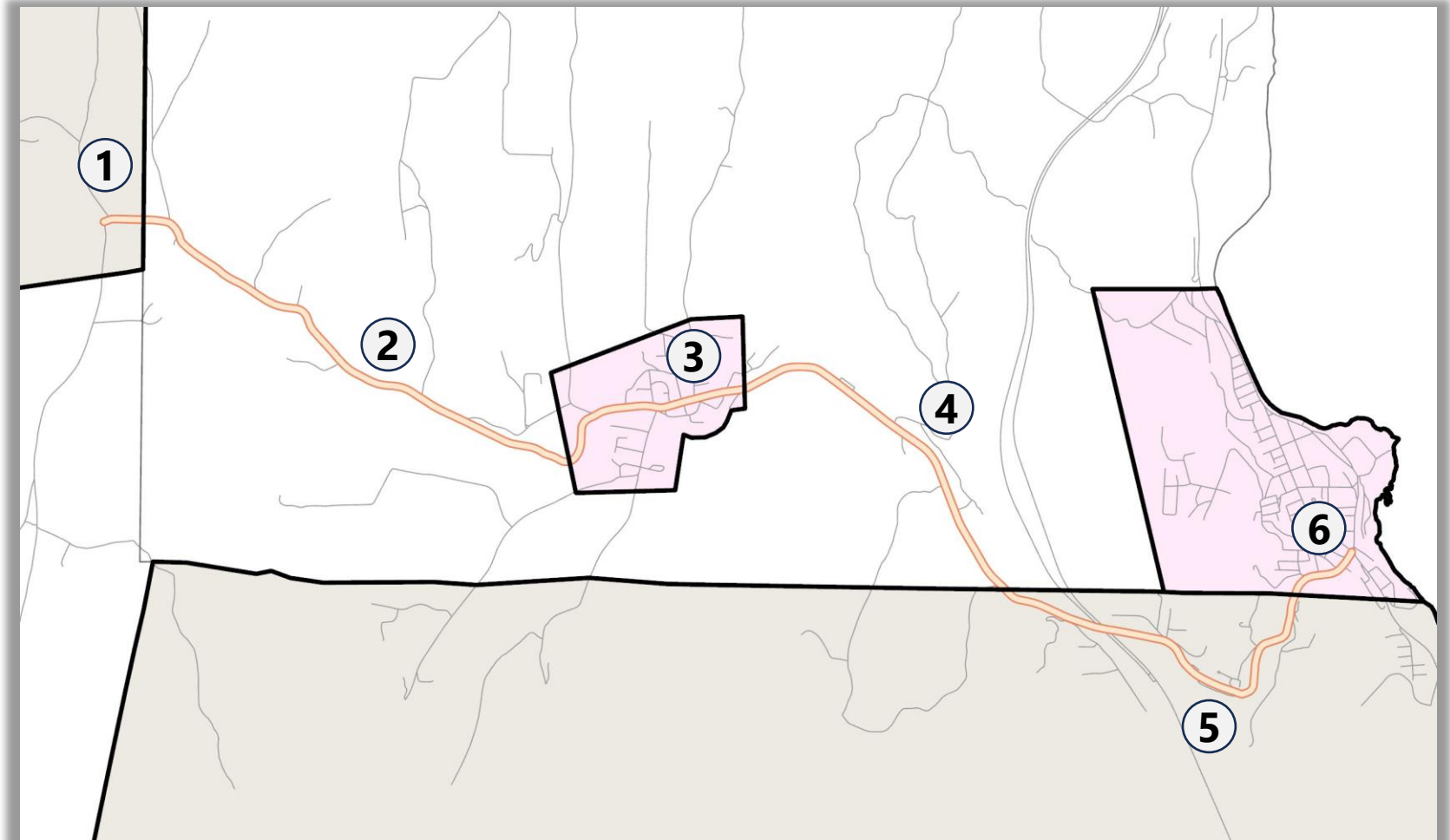
| | |
|---------------------------------|----|
| Cambridgeport to Saxtons River: | 12 |
| Saxtons River: | 9 |
| Saxtons River to Westminster: | 7 |
| Westminster: | 28 |
| Bellows Falls: | 6 |



Segmentation

Goal: Reflect different contexts and jurisdictional changes along corridor

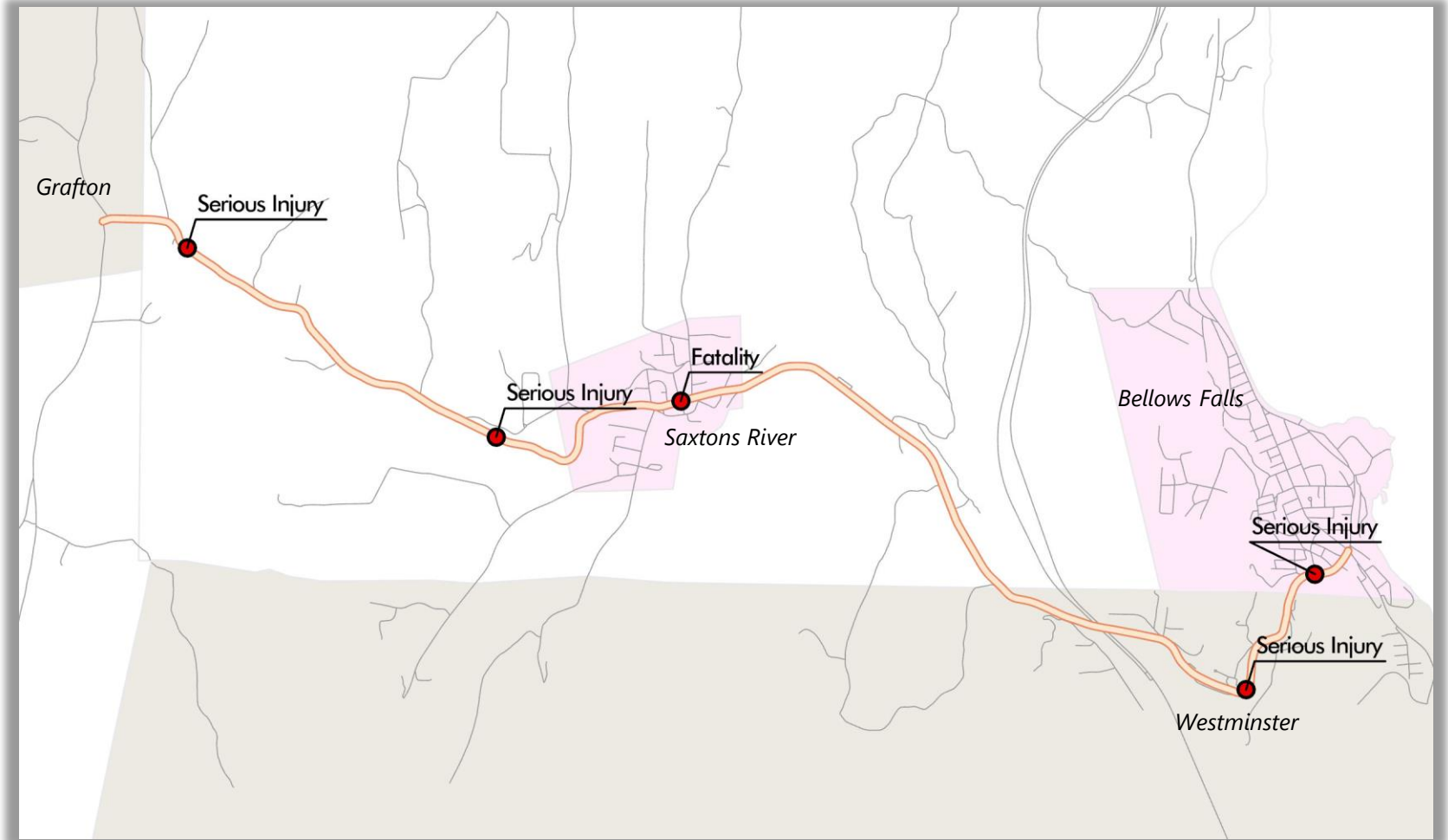
- ① Cambridgeport
- ② Rockingham West Segment
- ③ Saxtons River
- ④ Rockingham East Segment
- ⑤ Westminster
- ⑥ Bellows Falls



Serious Crashes

(from left to right)

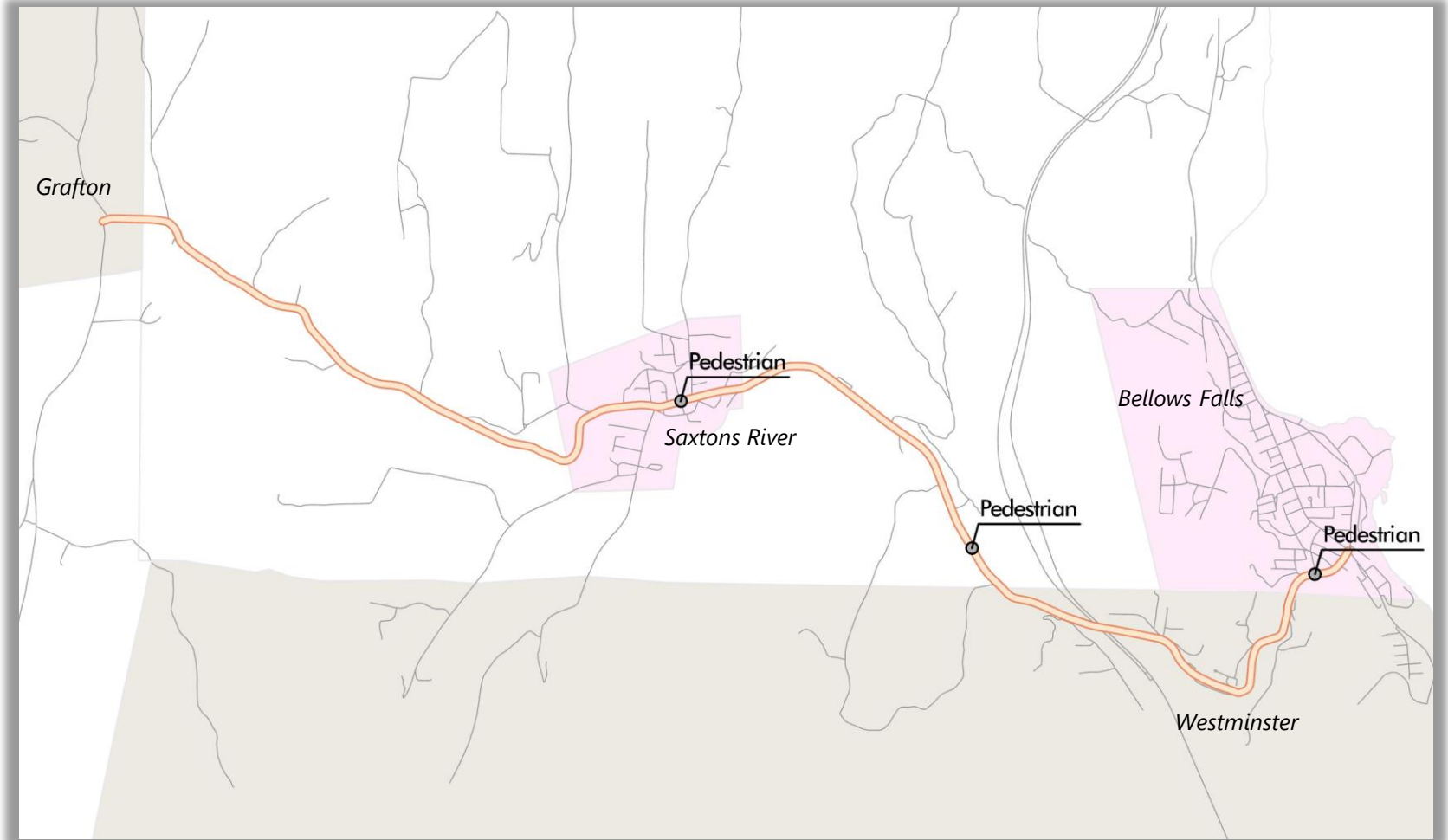
- Motorcycle run-off-road
- Run-off-road caused by fatigue
- Pedestrian crossed midblock and was not seen by driver
- Head-on crash, impaired driver
- Driver turning from side street did not see pedestrian



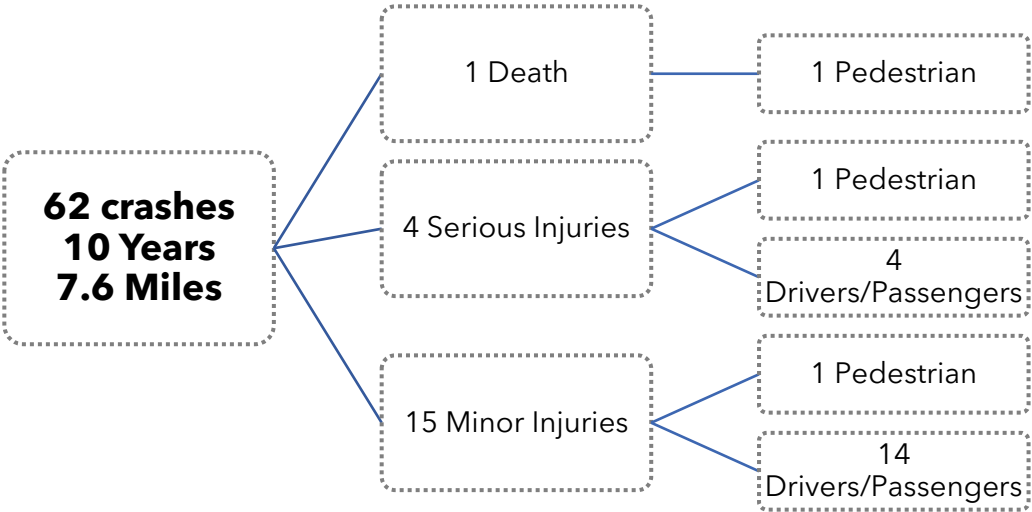
Pedestrian Crashes

(from left to right)

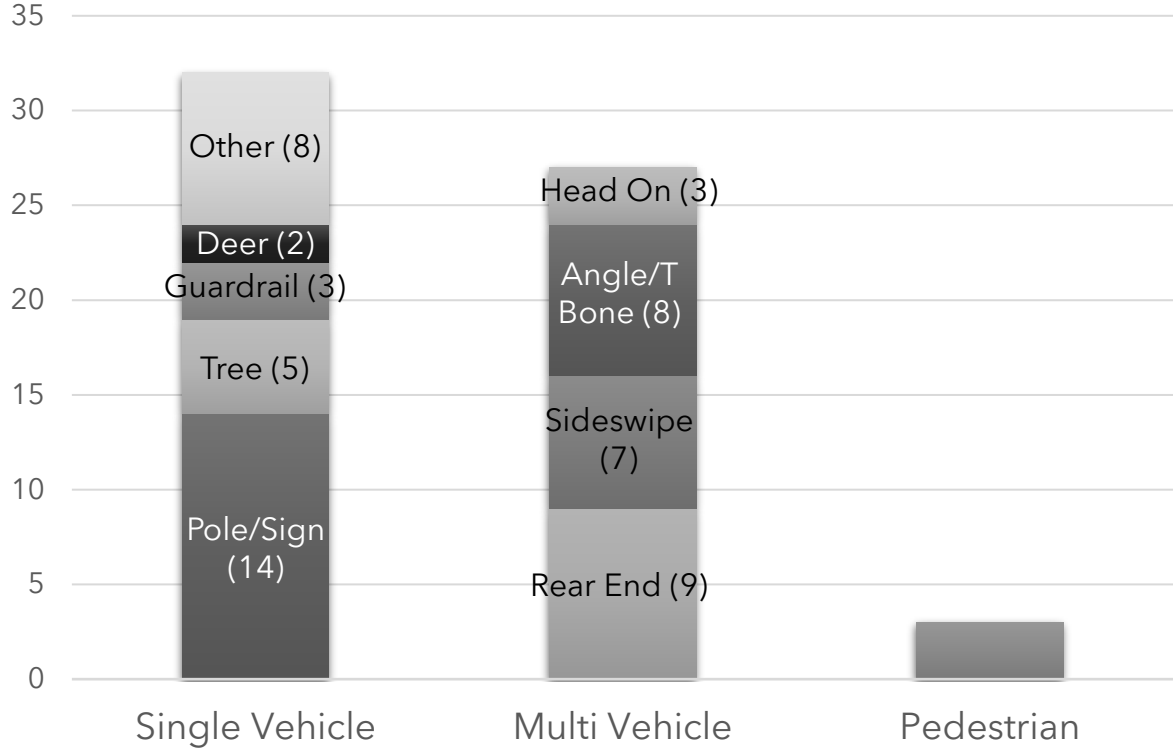
- Pedestrian crossed midblock and was not seen by driver
- Nighttime crash where a pedestrian stumbled into vehicle's path
- Driver turning from side street did not see pedestrian



2015-2024 Crash Overview



Crashes by Type



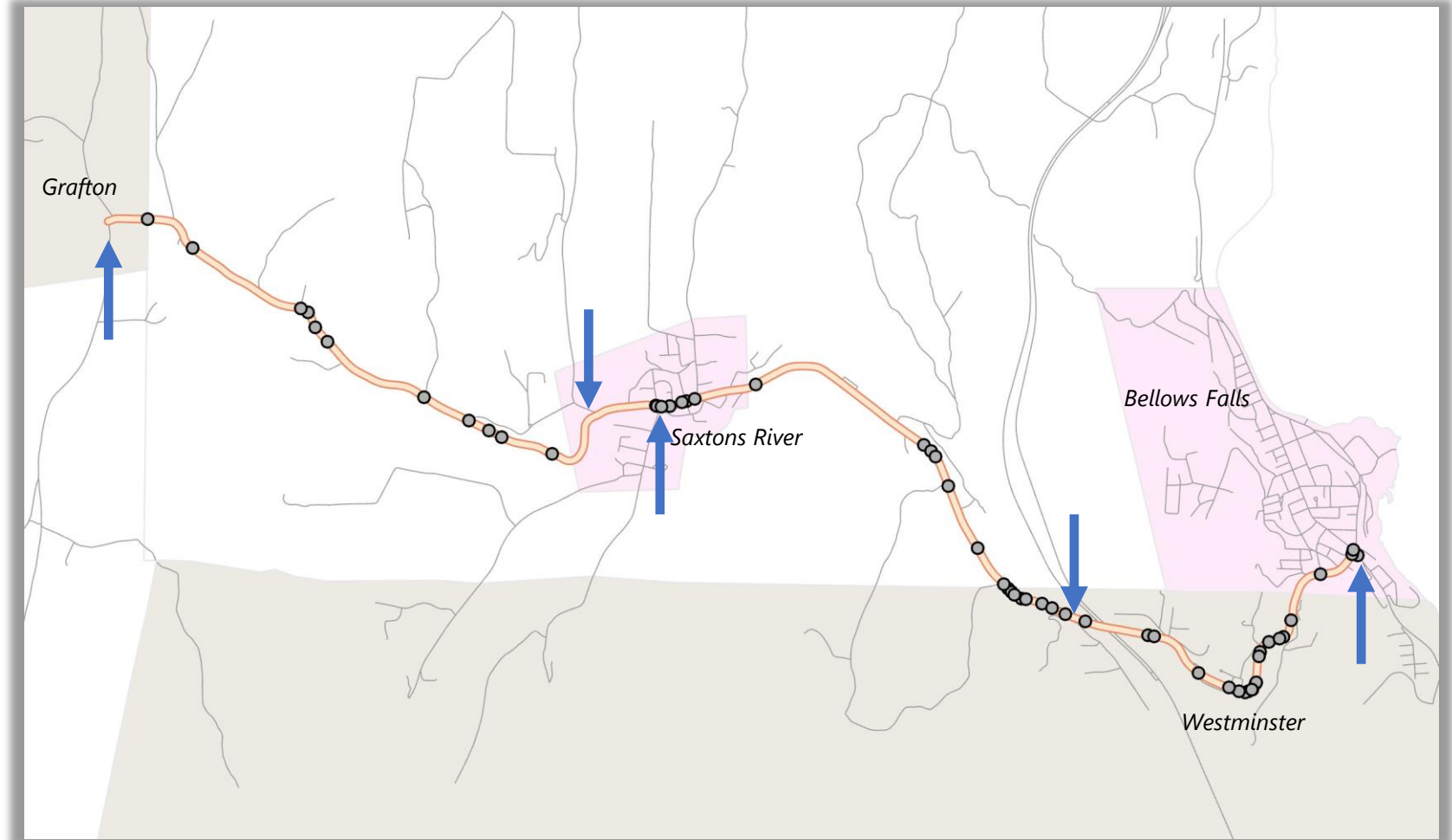
Crash Setting

Major Intersections:

- Vermont Route 35
- Pleasant Valley Road
- Westminster Street
- Back Westminster Road
- Atkinson Street

Minor Intersections

- 0
- 0
- 2
- 2
- 3
- 11



Existing Conditions

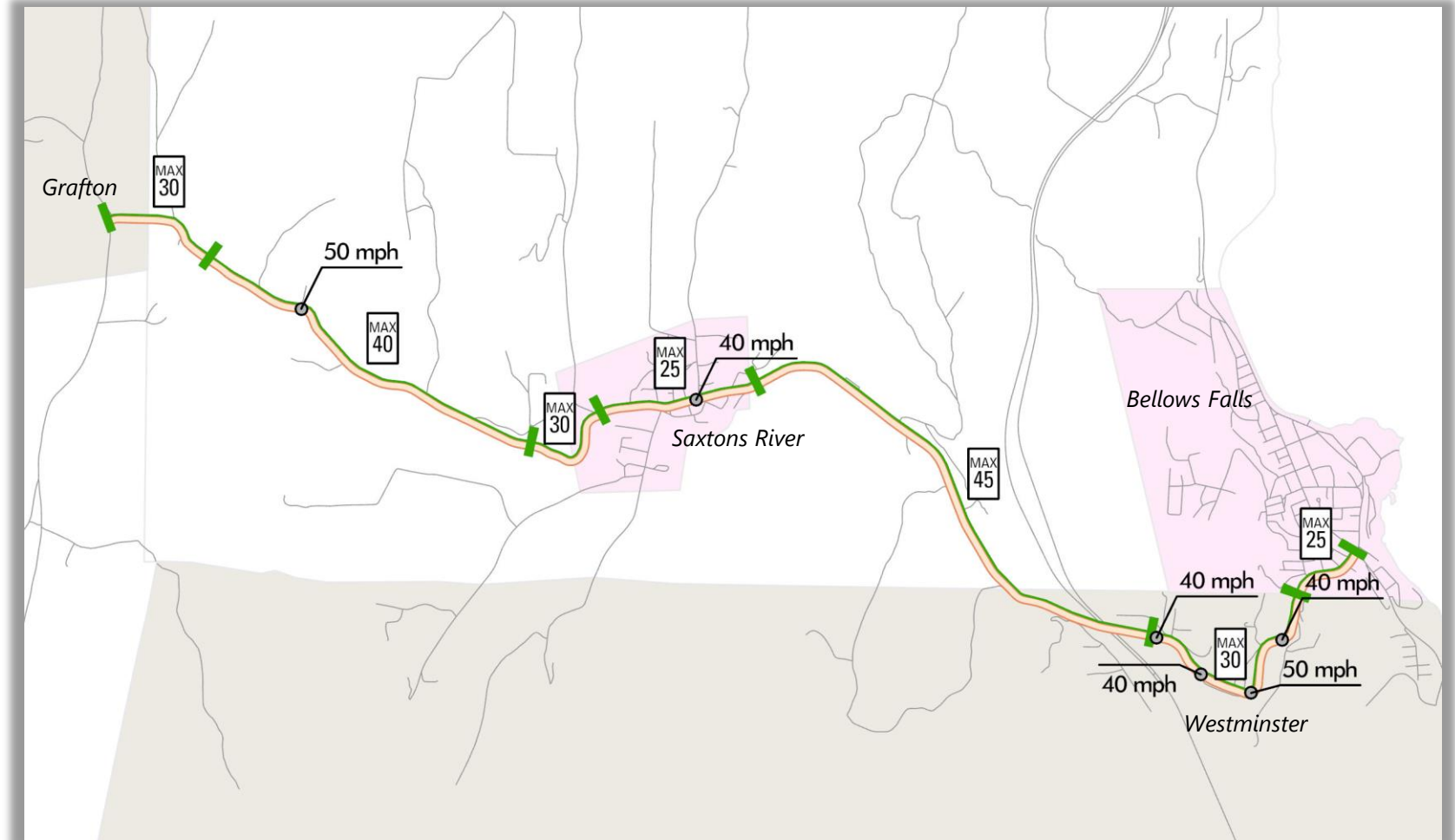
Speed Limits



Speeding

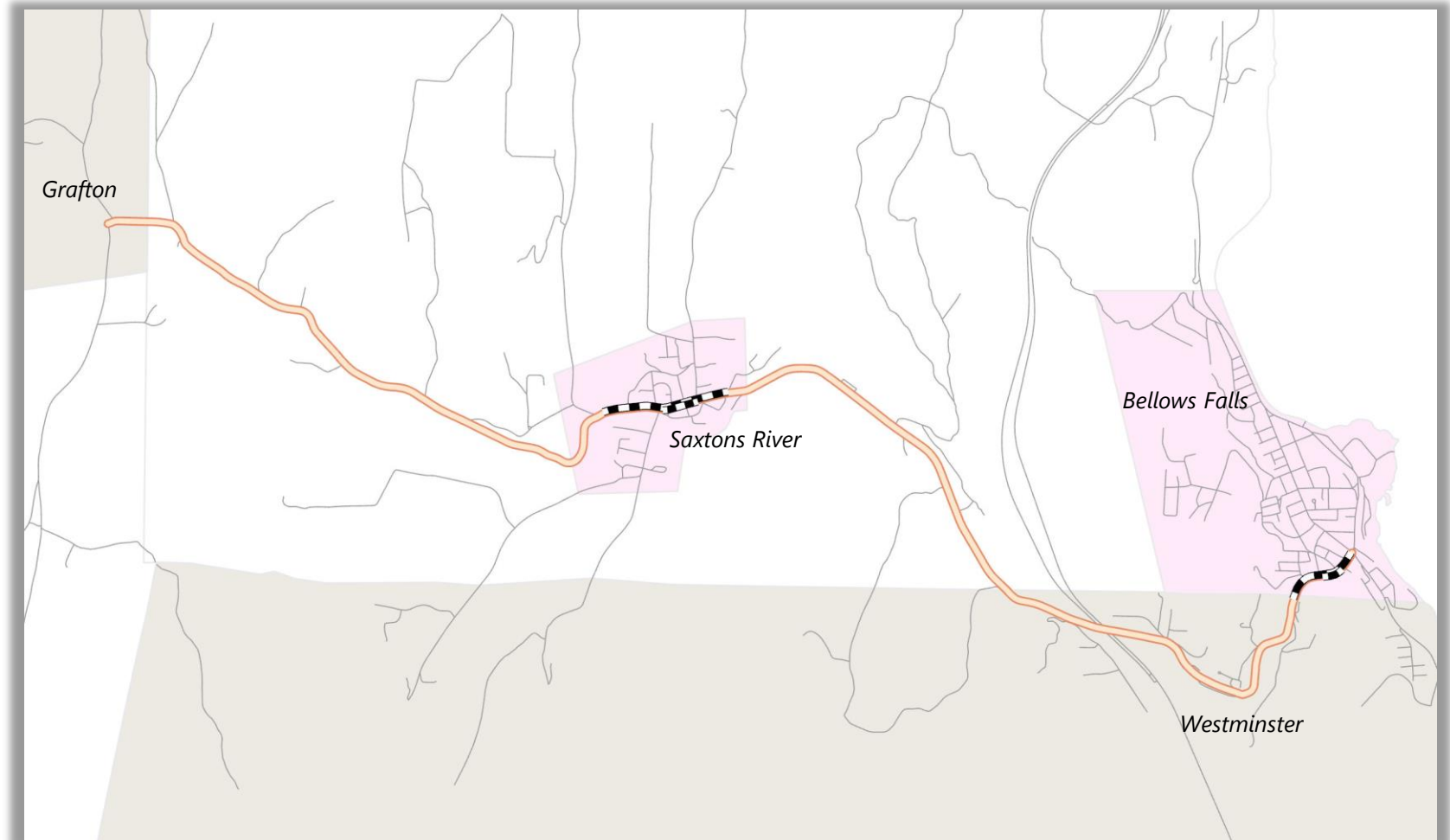
Speeding 10+ mph over limit

- 6 crashes (10%)



Existing Conditions

Sidewalks



Potential Strategies

Villages

Crosswalks and crossing enhancements

Sidewalk

Lighting

Signed bike/ped routes

Speed feedback signs

Intersections

Sight distance improvements

Advance signage

Curves

Outside edge widening

Curve delineation and signage

Advisory speeds

Behavioral

Enforcement

Education & Awareness

Tangents

Gravel shoulder

Paved shoulder - 2 to 8 feet

Rumble ("mumble") strips

Edge line striping

Guardrail

| Year | # of Crashes |
|-------------|--------------|
| 2015 | 10 |
| 2016 | 13 |
| 2017 | 9 |
| 2018 | 6 |
| 2019 | 8 |
| 2020 | 2 |
| 2021 | 1 |
| 2022 | 5 |
| 2023 | 4 |
| 2024 | 4 |

And by month:

| Month | # of Crashes |
|-------|--------------|
| Jan | 9 |
| Feb | 2 |
| Mar | 4 |
| Apr | 6 |
| May | 5 |
| Jun | 6 |
| Jul | 4 |
| Aug | 4 |
| Sep | 5 |
| Oct | 7 |
| Nov | 4 |
| Dec | 6 |